

Town of Johnsburg Newsletter

Supervisor's Report

Short Takes

Kellogg Buildings

A final document package has been forwarded from the Open Space Institute to the Town of Johnsburg, permitting the town to secure title to the historic Kellogg/Waddell properties. It is expected that the town will contract with Barton Mines during non use periods to create a revenue line to cover costs. The project already benefits from a significant grant awarded by New York State's First Wilderness Heritage Program.

Stec Chairs Board

At the January county board organizational meeting, Queensbury Supervisor Dan Stec was elected to serve as chairman of the Warren County Board of Supervisors.

The State of the Train

A county negotiation team is presently embroiled in detailed negotiations with Iowa Pacific Railroad Holdings with respect to a potential operation of the rail line from North Creek to Saratoga.

While a contract has not been awarded by the full board, the negotiation team along with Iowa Pacific representatives are making a preemptive effort at hammering out extensive operational and contractual complexities before the full board votes on the award.

The negotiations are by definition confidential at this juncture but are essentially aimed at addressing multiple issues between both sides to gauge contract viability.

Iowa Pacific has previously identified its plans to operate both passenger and freight service on the line. Passenger operations would include a ski train (a connection to the national rail terminal in Saratoga from all rural stations), a dinner train and Polar Express based in Saratoga as well as Thomas the Train based in North Creek.

While one five hour workshop session has been concluded, several additional sessions are required. The county negotiation team includes CPA Rob Lynch, County Administrator Paul Dusek, engineer Jeff Tennyson, counsel for Corinth, planner Wayne LaMothe, Corinth Supervisor Dick Galusha and Johnsburg Supervisor Sterling Goodspeed.

2011 Town Board Schedule

- Jan. 18—Library
- Feb. 1—Wevertown
- Feb. 15—Library
- March 1—Wevertown
- March 15—Library
- (Only one meeting per month Apr-Aug)
- April 5—Wevertown
- May 3—Wevertown
- June 7—Wevertown
- July 5—Wevertown
- August 2—Wevertown
- Sept. 6—Wevertown
- Sept. 20—Library
- Oct. 4—Wevertown
- Oct. 18—Library
- Nov. 1—Wevertown
- Nov. 15—Library
- Dec. 6—Wevertown
- Dec. 20—Library

(Regular meetings begin at 7 p.m.)

Free Tubing Days

(Town of Johnsburg Residents Only)

- January 23 11 a.m. to 9 p.m.
- February 12 11 a.m. to 9 p.m.
- February 27 11 a.m. to 9 p.m.
- March 4 3:30 p.m. to 9 p.m.

Water District

Short and long range engineering work and planning is underway with regards to the North Creek Water District. More info in next month's newsletter.



**MAJOR PROJECT PUBLIC NOTICE
APPLICATION DETERMINED
APA PROJECT NO. 2010-229**

Date: December 16, 2010

The purpose of this notice is to inform you that on December 16, 2010, the Agency conditionally approved the project and issued Permit 2010-229.

The project is located in the Town of Johnsburg, Warren County, on or near NYS Route 28. The tax map number of the property site is Section 118 Block 1 Parcel 64. The project involves a subdivision into sites involving the lease of a 100-foot by 100-foot parcel for the construction of a new 105-foot-tall (above existing ground level) telecommunications tower within a 70-foot by 70-foot fenced-in equipment compound. The compound will be located 1,800± feet (0.34 miles) north of NYS Route 28. The tower will be painted a dark charcoal gray or black with a non-reflective flat or matte finish. A vegetative "no cutting" easement will protect trees in the vicinity of the proposed tower. Within the fenced-in equipment compound, AT&T Mobility - Upstate NY is proposing to install 6 panel antennas on the tower (with future co-location of 3 additional panel antennas as the same height) and construct a 20-foot x 12-foot equipment shelter along with a backup generator. Access to the facility will be by an existing driveway and trail, 2,205± feet (0.42 miles) in length, which will be upgraded to accommodate construction and service vehicles. The access drive will disturb a 0.01-acre area of wetlands, but a 0.01-acre of mitigated wetlands will be created immediately adjacent to the disturbance. Underground utilities will be located along the road. Room for three additional carriers is available both within the compound and on the tower.

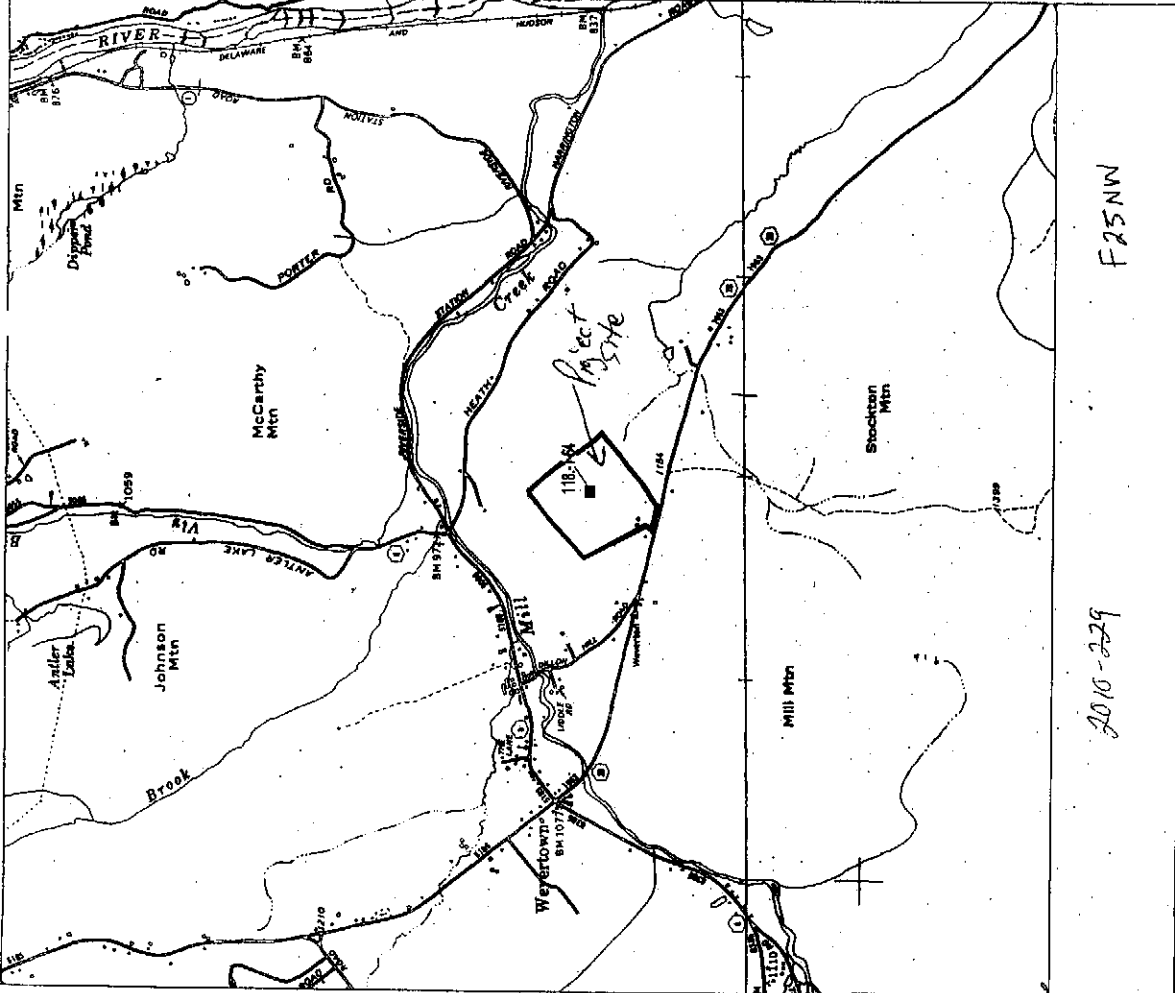
Please contact Ariel A. Diggory, the assigned Environmental Program Specialist, if you should have any questions.

12/16/10
Date

[Signature]
Richard E. Weber, III
Deputy Director, Regulatory Programs

REW:AAD:slp

cc: Independent Towers Holdings, LLC
Jacqueline Phillips Murry, Esq



2010-229

F25NW

New York State
Adirondack
Park
Agency
Geographic
Information
System

Panel Search Results
County: WARREN
Town/Village/Vorwerk:
Tax Parcel F: 118.64
2010 Owner: SARGENT HENRIE
www.adirondack.org 09/14/10 Scale: 1:24,000
Acres: 10.11
1 Kilometer
4000 Feet
1 Mile